

BWV 530  
1. Allegro

$\text{♩} = 108$   
*mp*

10

20

28

36

46

57

66

75

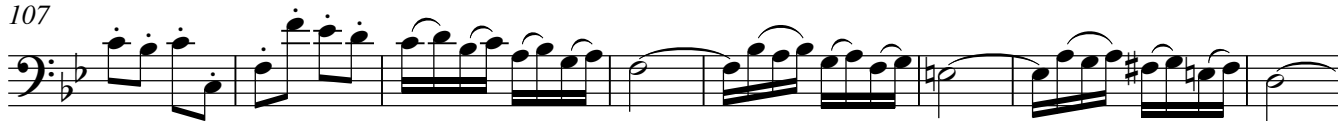
83

93

100



107



115



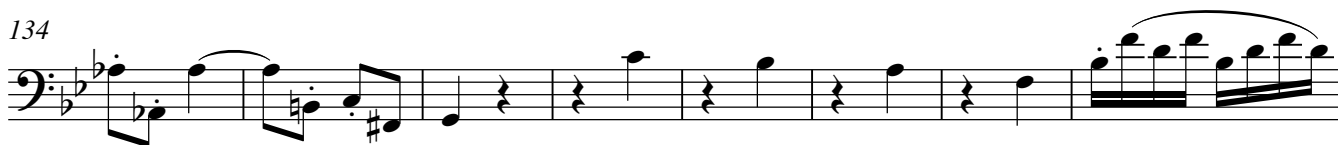
121



127



134



142



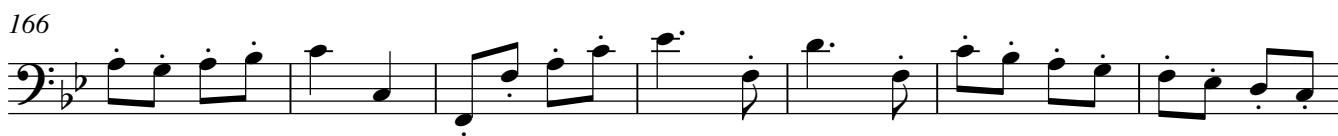
149



156



166



173

rit. . . . .



181  $\text{♩} = 92$ 

187



193



199



205



211



217



## 3. Allegro

222

♩=108



227



232



236



240



244



248



252



256



261



265



269



273



277



281



284



289



294



297

